

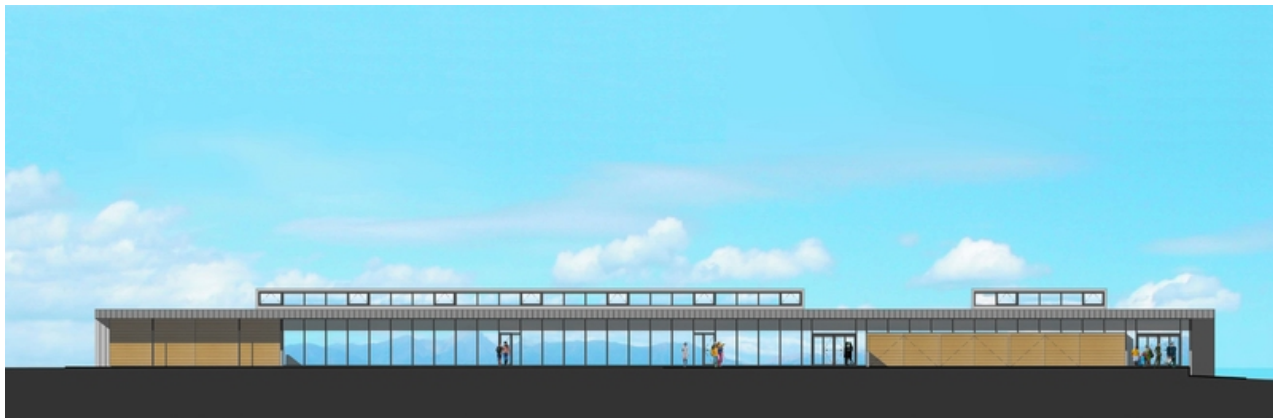


CANADIAN ROCKIES INTERNATIONAL AIRPORT

INFORMATION PACKAGE & TECHNICAL SPECIFICATIONS

CYXC Airport Improvements

October 2008



mcfarlaneGreen
ARCHITECTURE + DESIGN INC

Canadian Rockies International Airport
Airside Elevation
50% Completion December 19, 2003

Background

Tourism activity in the Kootenay region has outpaced much of the province over the last several years as more people have discovered its natural beauty and the recreational activities it offers. The area receives visitors from Canada, the US, Europe, and Asia. Commercial enterprises such as ski resorts, golf courses and hotels have been developed to capitalize on the emerging worldwide interest. Cranbrook Airport has been identified as a potential gateway through which tourists from afar could access the Canadian Rockies. Significant changes to the airport are underway to accommodate larger aircraft and more passengers.

The City of Cranbrook in partnership with several levels of government has commissioned significant upgrades to the airport facilities that are currently underway. These upgrades include an extension to the existing runway, terminal building expansion, and a series of upgrades to the fuelling, baggage handling, and related operational areas. Of significant interest is the construction of a CBSA (Canada Customs and Immigrations) facility to ensure timely processing of passengers is available on demand.

COMPLETE 8000-foot runway extension and navigational aid upgrades

COMPLETE Opening of the International Arrivals Area

COMPLETE Opening of the Canada Border Services Facility

COMPLETE Opening of the International Departures Area

COMPLETE New Air Terminal Building



Artist rendition of the passenger check in area including a stunning view of the Canadian Rocky Mountains

Project Details

Runway 16/34

The current 8000-foot runway extension is **complete** and can now accommodate the following aircraft:



Airbus
A310
A319
A320
A321



Boeing
737-600NG
737-700NG
737-800NG
757-200
767-300 (limited operations)

- Performance – the declared distances for aircraft operations are outlined in Table 1.
 - (TORA) – Take-off run available
 - (TODA) – Take-off distance available
 - (ASDA) – Accelerate stop distance available
 - (LDA) – Landing distance available

Table 1: Declared Distances

	Runway 16	Runway 34
TORA	8000	8000
TODA	9000	9000
ASDA	8000	8000
LDA	7200	8000

AIRPORT WEATHER RELIABILITY FACTOR 99.98%

Alternates: GPI (Kalispell) 104 NM YYC (Calgary) 113 NM
GEG (Spokane) 129 NM YLW (Kelowna) 132 NM

- Instrument Landing System

The airport is equipped with a CAT I Instrument Landing System (ILS) complete with localizer, glide path, DME and VDF service with inset approach lighting. A SSLAR high intensity approach lighting system is installed for Runway 16 with ODALS serving Runway 34.

Approach minimum – 200 foot ceiling and ½ mile visibility

- Pavement Load Rating

ICAO Classification Code 54/F/A/---Mpa/T
Load Rating 11

- Departure Procedure

RWY 16 – ½ - CAT A & B 270 ft/NM required climb gradient
RWY 16 – ½ - CAT C & D 420 ft/NM required climb gradient
RWY 34 – ½ - 420 ft/NM required climb gradient

- Air Traffic Control Services

24 hour Flight Service Station
METAR H24
TAF H24, issue times 00, 06, 12, 18Z
Pilot Information Kiosk

- Ramp Services

Full ramp service and baggage handling is available including the following equipment:

GPU, airstart, lav, de-ice (type 1 & 4), belt loading, cabin cleaning, catering, push back tug, tow bars/interceptors, Jet A-1 truck into plane, 100/LL.

- Fuel Facilities

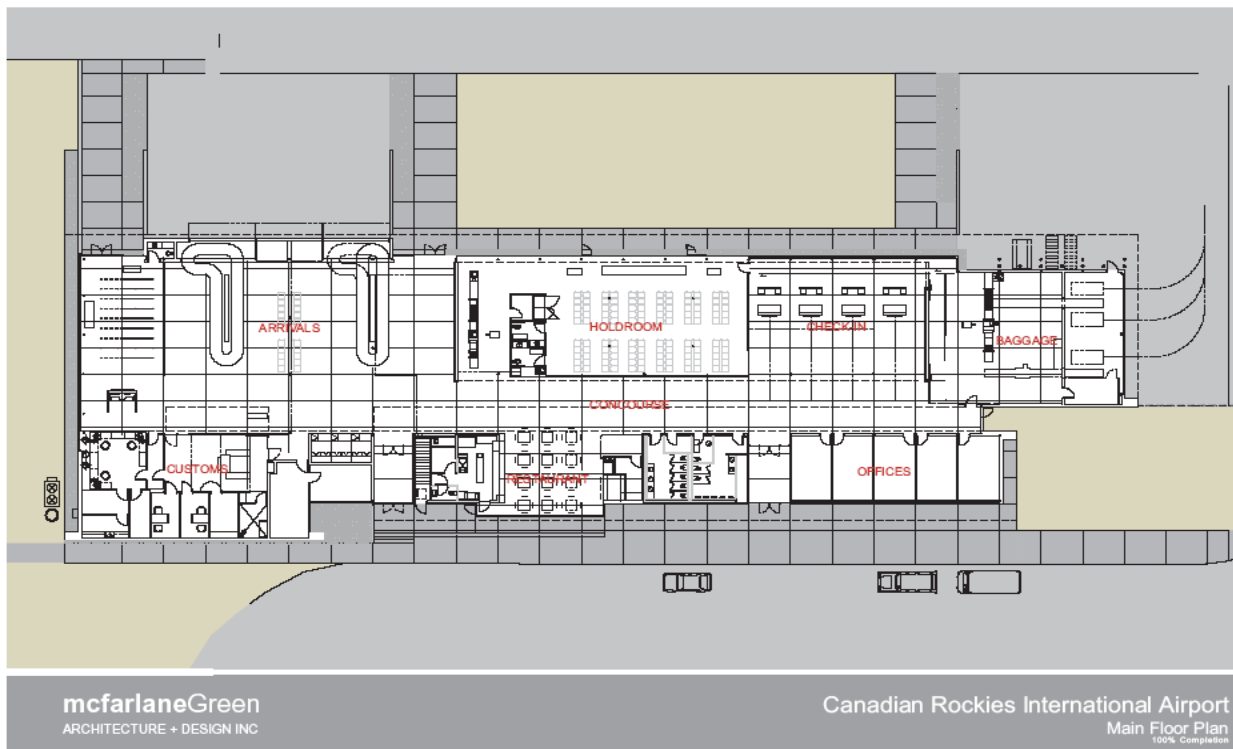
Imperial Oil (ESSO) owns and operates the fuelling facility under contract with Daiken Esso. Fuel equipment includes two above ground 50,000 litre tanks as well as 20,000 Jet A-1 bowser.

Terminal Building

The new air terminal building covers 2100 square metres and was completed in October 2008. The state of the art facility is constructed of mostly glass and wood to ensure the stunning Rocky Mountains are prominently positioned for viewing from all areas of the facility. The arrivals area is designed to handle international and domestic arrivals concurrently to ensure passengers complete a quick transition from airside, through customs to ground transportation in a efficient and timely manner.

The Air Terminal Building includes the following services:

- Canada Border Services Agency (Customs and Immigrations)
 - Expected staffing levels 4 CBSA agents
 - 320 Airbus estimated clearance time less than 45 minutes
- Outbound Security Hold Bag Screening (ICAO International Standards)
 - Hold room capacity 140 passengers in Phase I
- Pre-board Security Screening
- Restaurant and Gift Shop
- Bus and Shuttle Parking Curbside
- Airline Offices and Cargo Capability



For further information contact:

Canadian Rockies International Airport – Phillip Elchitz
1-9370 Airport Access Road
Cranbrook, British Columbia
Canada, V1C 7E4
www.flycanadianrockies.com 1-250-426-7913